



THE HORIZON

3 BR | 3.5 BR | 1,538 SF

This 3-bedroom, 3.5-bathroom townhome is perfect for entertaining with an open living area. Enjoy the seamless flow from the spacious kitchen, equipped with modern appliances and a large island, to the inviting living room. Large windows brighten the space with natural light, creating a warm and welcoming atmosphere. Step outside onto the private deck, where you can host barbecues or simply relax with a good book. The primary suite offers a luxurious retreat with a walk-in closet and an en-suite bathroom featuring. This home provides the perfect blend of comfort and style, making it an ideal choice for families and guests alike.

470-206-2354

ccaddell@growth-homes.com

www.growth-homes.com

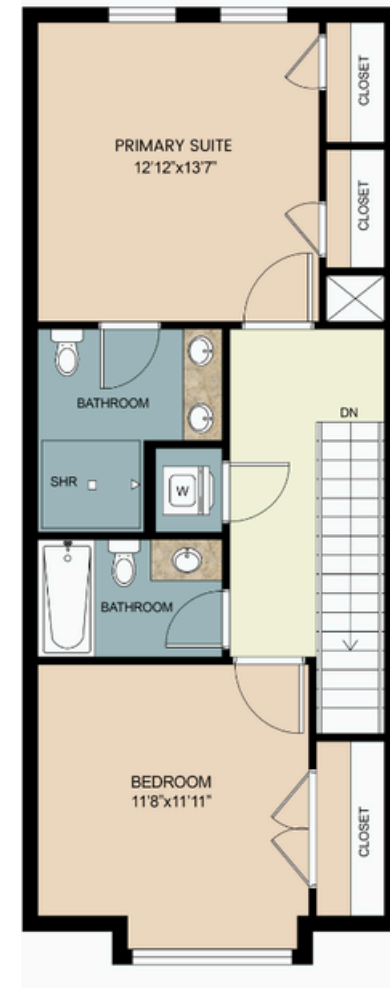
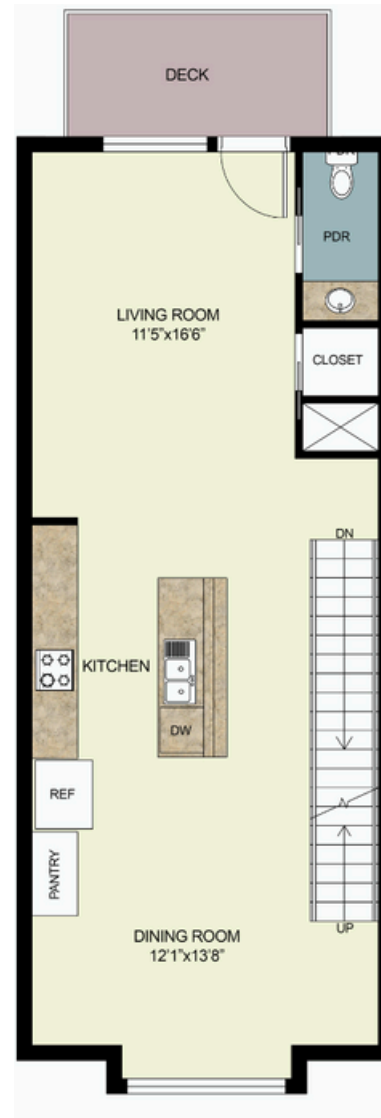
Three Points
AT CHOSEWOOD PARK



THE HORIZON



3 BR | 3.5 BR | 1,538 SF



Floor plans and images shown are artistic renderings and may vary. Pricing and plans are subject to change at any time without notice. Information to be verified with Sales Agent. 120924